

## PARKS

Most Croydon residents have a public park within easy reach. They include grassed areas for sport, colourful ornamental gardens, and natural areas with native trees, wild flowers, and associated wildlife.

Some parks offer toilet and café facilities and there is a range of sports that can be played, including the UK's first disc golf course in Lloyd Park.



Above: **Elephant Hawk Moth & Fuchsia flower**  
Left: **Peacock Butterfly on Buddleia**



## CEMETERIES & CHURCHYARDS

These areas provide important green space. They can include woodland and grassland and are quiet places for both wildlife and people.

Because churchyards and cemeteries have been in use for a very long time they support wild meadow plants and flowers. Gravestones are ideal for lichens and many church towers provide a roost for bats.



## OTHER GREEN SPACES

There are some green spaces which are closed to the public or where access is restricted. These may also be rich in habitats and wildlife, and they form important wildlife corridors which allow wildlife to travel from one site to another. They include privately-owned woodland, golf courses, railway embankments, school grounds, sports fields, allotments and reservoirs.

## OUR PROJECT



The **Green Croydon for All** project is delivered by ACCS, the Association of Croydon Conservation Societies, with the support of Croydon Council and funded by The National Lottery through Big Lottery Fund.

**ACCS** is an umbrella group of voluntary organisations concerned with nature conservation in the London Borough of Croydon. Members of these groups volunteer their time to carry out practical conservation work, to lead walks and talks to share their knowledge, and to research the history and ecology of the green spaces.

Visit the ACCS website [www.accs-croydon.co.uk](http://www.accs-croydon.co.uk) or contact the Community Partnership Officer at Croydon Council 020 8726 6900.

Above: **Bee Display, Woodfest, New Addington**  
Left: **King's Wood Open Day**



Left: **Mask making at Selsdon Wood**  
Above: **Bat box check at Addington Hills**  
Above right: **Bug tower at Westow Park**  
Right: **Foxglove**



## WHAT CAN YOU DO?

### Private back gardens

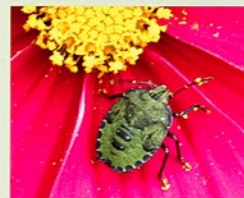
There are over 3 million private front and back gardens across London. They provide an important resource for local wildlife and people. Compared with the open countryside, they provide a greater diversity within a small space and a larger amount of shelter, plus they provide an additional supply of food.

Back gardens are great news for climate change too, as they provide shade, absorb carbon, retain water and help to cool the borough. Many back gardens linked together create a network of small spaces which allow wildlife to travel and flourish.



### To make your garden more wildlife friendly there are a lot of simple things you can do...

- Set up a compost heap. Not only does it enable you to recycle your kitchen and garden waste, it also provides a home for wildlife, including slow worms, who like the warm conditions inside the heap.
- Plant drought resistant plants, mulch your shrub and flower beds to retain moisture and get a water butt to collect rain water.
- Plant native shrubs and trees, which produce an abundance of flowers in the spring and berries in the autumn, vital food sources for bees and butterflies as well as birds.
- Plant a mixed native hedge, which will provide nesting, feeding and hibernating spaces.

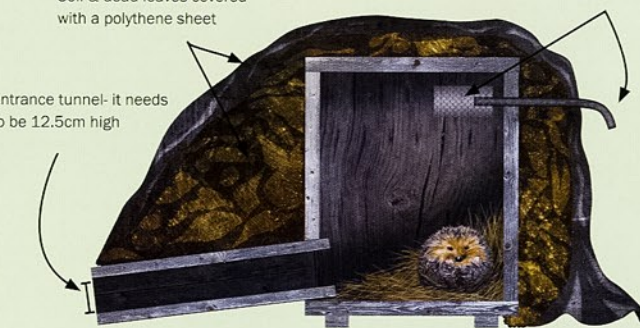


### Build a hedgehog home!

Soil & dead leaves covered with a polythene sheet

Hose for ventilation- cover end with wire net to avoid it getting clogged up.

Entrance tunnel- it needs to be 12.5cm high



## GETTING THERE

Most of Croydon's green spaces can easily be reached on foot or by train, bus or tram. Please note that some sites do not have a dedicated car park.

**For buses and trams:**  
Transport for London 020 7222 1234  
[www.tfl.gov.uk](http://www.tfl.gov.uk)

**For trains:**  
National Rail Enquiries 08457 48 49 50  
[www.nationalrail.co.uk](http://www.nationalrail.co.uk)



- Make a pond, however small. Water is vital for all wildlife; birds need a place to have a bath to clean their feathers, frogs and toads lay their eggs in ponds and bats will always have a drink before they set out for the night.
- Create a woodpile in a shady corner of the garden to attract stag beetles and other insects. Hedgehogs like to hibernate in a heap of leaves and shrub cutting, which keep them protected from the winter cold.
- Make a bird box, build an insect hibernaculum, make a hedgehog box or just a simple bird feeder.

For instructions, more information and further inspiration visit [www.wildlondon.org.uk](http://www.wildlondon.org.uk).

## EXPLORING & GETTING INVOLVED

Local groups and Croydon Council organise guided walks throughout the year and across the borough. There are also a number of leaflets available for self-guided walks, including nature trails in King's Wood and Foxley Wood. You can pick up leaflets in your nearest library, in the Visitor Information Centre next to East Croydon Station, or visit [www.accs-croydon.co.uk](http://www.accs-croydon.co.uk) and [www.croydon.gov.uk](http://www.croydon.gov.uk).

**Get involved** – you can plant trees, clear brush, build steps or help to monitor local wildlife.



**Organisations which run practical conservation tasks in Croydon include:**

- TCV 020 8726 0974, [www.tcv.org.uk](http://www.tcv.org.uk)
- City of London 020 8660 8533, [www.cityoflondon.gov.uk](http://www.cityoflondon.gov.uk)
- Downlands Countryside Management Project 01737 737700 [www.surreycc.gov.uk/downlands](http://www.surreycc.gov.uk/downlands)
- Surrey Wildlife Trust [www.surreywildlifetrust.org](http://www.surreywildlifetrust.org)
- London Wildlife Trust [www.wildlondon.org.uk](http://www.wildlondon.org.uk)
- Friends of Park Groups

For contact details of over 20 local groups, look on the ACCS website [www.accs-croydon.co.uk](http://www.accs-croydon.co.uk) or contact the Community Partnership Officer at Croydon Council, 020 8726 6900, [www.croydon.gov.uk](http://www.croydon.gov.uk).