

GREEN CROYDON FOR ALL

Green Croydon

Places for Wildlife

Discover **YOUR** Local Wildlife & Open spaces

Fold out map inside

GREEN CROYDON

Croydon has 120 parks and open spaces which you can visit freely. More than 50 of these are natural green open spaces where you can enjoy nature through the seasons. Although Croydon has the image of being a concrete jungle, there are many places for you to discover nature - on your doorstep or in a nearby park.

This map was produced in 2010 to mark the International Year of Biodiversity, a celebration of all living things in the world and the places where they live. The map and leaflet were updated in 2019 for its 4th reprint.

Because Croydon's geology, the types of rocks and soils, is very varied, there is a range of habitats, including woodland, chalk grassland, heathland and open water. All these support a rich variety of plants, animals and fungi.



Above: A Chainsaw course
Left: Goats graze in Happy Valley

Small Copper Butterfly

Greater Knapweed



Leisler's Bat



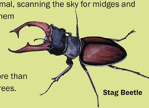
Making Charcoal



Pipistrelle Bat

Did you know...?

- Croydon is a stronghold of a nationally rare beetle, the Stag Beetle. It is the largest beetle in the UK and can be found in local woodlands and also along roadsides and gardens in Waddon.
- You can see sheep, cows and goats grazing the chalk meadows in the south of the borough.
- Volunteers produce BBQ charcoal and firewood in Croydon's woods, for the local market.
- If you watch the night sky you are likely to see bats, our only flying mammal, scanning the sky for midges and moths - watch them from your back garden or in a nearby park.
- Croydon has more than 35,000 street trees.



Stag Beetle